

Peterborough Local Area Written Statement of Action (Special Educational Needs and Disabilities)

November 2019



Contents

Foreword	Page 3
Introduction	Page 4
Governance and accountability	Page 6
Written Statement of Action	Page 9
Appendices:	
A – Membership of key accountable bodies	Page 29
B – Cambridgeshire and Peterborough Joint SEND Strategy	Page 31

Foreword

Senior leaders across the Council, the Clinical Commissioning Group, Public Health and their partners welcome the inspection report which tested the progress of the local area in meeting the requirements of the 2014 SEND reforms, finding areas of both strength and weakness.

Areas of strength included the growing impact of the SENCo network, the strength of coproduction with parents and young adults and the increasing influence of young adults in strategy through initiatives like the 'Big Youth Shout Out'. Inspectors also identified areas of weakness and leaders are determined to address these within the resources available so that we do all that is possible to improve outcomes for children and young adults with special educational needs and disabilities (SEND). We are committed to working more effectively together to ensure that children, young adults and their families lead happy, healthy and fulfilled lives.

Our pledge to improve the life outcomes for children and young adults with SEND is expressed in our joint SEND strategy with Cambridgeshire - 'Special Educational Needs and Disabilities (SEND) is Everybody's Business'. We developed this strategy by listening carefully to what children and young adults with SEND and their families and carers told us about their experiences and views. We worked closely with families, children and young adults to produce this strategy and commit to the same level of participation and engagement to ensure the delivery of the delivery of the written statement of action below.

We have high aspirations for all our children and young adults and want to ensure they have the right support that is provided in the right place and at the right time so that they can thrive and be the best they can be. We will ensure that the written statement of action drives robust, sustainable and high-quality improvements in their lives and the lives of their families.

Councillor Lynne Ayres, Cabinet Member for Children's Services, Education, Skills and the University, Peterborough City Council



Wendi Ogle-Welbourn, Executive Director People and Communities for Cambridgeshire & Peterborough councils



Jan Thomas Accountable Officer for the Cambridgeshire and Peterborough Clinical Commissioning Group



Introduction

Between 10th June 2019 and 14th June 2019 Ofsted and the Care Quality Commission (CQC), conducted a SEND inspection of Peterborough local area to judge the effectiveness of the implementation of the Special Educational Needs and Disability (SEND) reforms in the Children and Families Act 2014 and to review the area's provision for children and young adults with SEND.

Three inspectors were involved: Heather Yaxley HMI, Deborah Mason, Ofsted and Paula Morgan, CQC. As part of their work the inspectors reviewed documentary and published evidence, the Local Offer website and information from a 'webinar' with parents/carers which took place in the week before the inspection. The inspectors carried out the on-site inspection over 5 days with formal verbal feedback provided on the fifth day. Inspectors spoke with children and young adults with disabilities and/or special educational needs (SEND), parents and carers, local authority and NHS officers. They visited a range of providers and spoke to leaders, staff and governors about how they were implementing the special educational needs reforms. Inspectors looked at a range of information about the performance of the local area, including the local area's self-evaluation. Inspectors met with leaders from the local area for health, social care and education. They reviewed performance data and evidence about the local offer and joint commissioning.

Findings

Ofsted and the CQC published the final report on 13th August 2019. The report indicates that the inspectors agreed that their findings chimed with Peterborough's own self evaluations and many areas of strength were identified. However, they identified significant weaknesses in the 5 areas set out below:

1. Joint planning, including commissioning, and intervention are not sufficiently well established to make sure that all agencies and services play an active role in meeting the requirements of 2014 disability and special educational needs reforms.
2. There is no quality assurance framework for the local area's work for children and young adults with SEND. Intended outcomes for children and young adults are not targeted, measured or evaluated well enough to inform leaders about the impact of the work to implement the reforms effectively.
3. The current arrangements for the DCO in relation to the implementation of the reforms do not allow the postholder to fulfil the obligations of the role sufficiently.

4. Early support is well embedded for children in early years, but does not follow through in all areas of the lives of children and young adults as they get older. It takes too long for children, young adults and families to get the support they need.
5. The provision for young adults aged 18 to 25 is not sufficiently developed to make sure that young adults have the full range of opportunities and support that they need as they move through into adulthood

As a result, the local area is required to produce a written statement of action (WSOA) by 15th November 2019. OFSTED will respond to the WSOA within 10 working days of receipt with an evaluation on whether the WSOA is fit for purpose. If required, a further 20 days is provided for resubmission of an amended version.

Response

The significant areas of weakness identified in the inspection report are addressed in this written statement of action (WSOA).

The written statement of action has been coproduced by the SEND partnership Group and refined by a smaller 'drafting' sub group of the partnership group and signed off by the SEND Executive Board.

The written statement of action will be shared widely through the Local Offer, networks, newsletters, conferences, partners and stakeholders including Peterborough Family Voice (our local Parent Carer Forum), and our SEND Independent Advice and Support Service.

The area is committed to involving children and young adults with SEND and their families in decisions about services for them. Coproduction is well embedded in local practices. Parents/carers have participated at all stages in the development of this written statement of action. Parents/carers will be involved in all working groups and we will also take every opportunity for children and young adults to be included in the improvement work.

The WSOA has five workstreams which mirror the five areas of weakness identified by the inspection. Each workstream is sponsored by a senior officer (AD equivalent level or above) from the LA or CCG. These senior officers are accountable for the delivery of actions within their workstream. The senior accountable officer (SAO) has an identified multi – agency delivery team of officers at manager level or above with whom they will ensure the delivery of the actions set out.

The WSOA is separate from other existing action planning although there will inevitably be areas of overlap, particularly with the joint SEND action plan associated with the joint SEND strategy. The WSOA addresses areas specific to the weaknesses raised by the inspection and is intended to cover a period of approximately 18 months. The joint SEND strategy expresses the long-term ambitions of the joint area but it is anticipated that the areas of work covered by the WSOA will enhance work to implementation of the strategy.

Governance and accountability

The Cambridgeshire and Peterborough Child Health and Well-Being Commissioning Board has responsibility for the commissioning of integrated services to support children and young adults, including those with SEND. The Commissioning Board is supported by the Child Health Executive Board, which comprises of commissioners and providers. These Boards report to the Health and Well-Being Board. Membership of the Executive includes Chief Officers from the Local Authority, Cambridgeshire and Peterborough Clinical Commissioning Group, Cambridgeshire Community Services, Cambridgeshire and Peterborough Foundation Trust, Health Watch, Local Hospitals, Public Health, Family Voice, Pin Point (parent/carer forums).

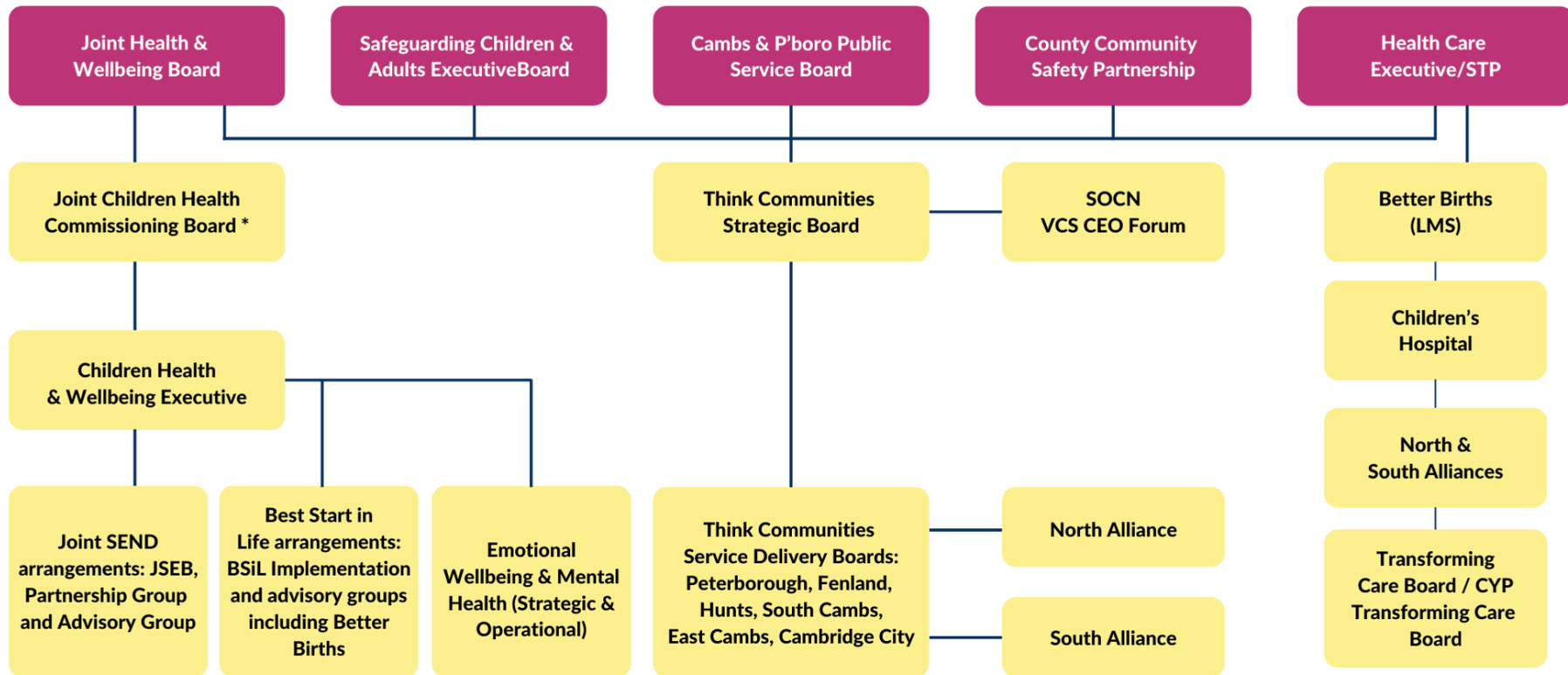
The SEND Executive Board reports into the Commissioning and Executive Boards. It is responsible for the development and delivery of the SEND Strategy and Plan. It will have oversight of the delivery of the written statement of action in Peterborough, escalating any areas of concern to the Commissioning or Executive Board, depending on the nature of the concern. The SEND Executive Board is supported by Peterborough and Cambridgeshire Partnership Groups who are responsible for driving delivery of the Strategy and Action Plan.

This governance structure is illustrated in the following diagram.

***The Joint Children Health Commissioning Board feeds into the CCG Boards, LA Committees and Health Executive/STP where appropriate.**

NB: a children 0-25 with complex needs (including tier 4) group has recently been established to discuss the Tier 4 list and ensure plans are in place for discharge and agree funding, address and resolve areas of contention between the LA and health, update on the work developing provision for children with disabilities, consider any Ministry of Justice (MOJ) young people who will need provision. This group will feed into the Children Health & Wellbeing Executive.

Cambridgeshire and Peterborough Governance Structure



155

Full and thorough consideration has been given to the way in which each of the workstreams will be managed. Having considered carefully all of the options a deliberate decision has been made to give responsibility to senior accountable officers for ensuring that work progresses. Each senior accountable officer has a multi-agency team with whom they will deliver the workstream. The emphasis has been deliberately placed upon impacts and outcomes and the need to work together in partnership to get the job done. The senior accountable officer will be responsible for ensuring the collation of progress reports to the SEND Executive Board. This approach is designed to promote the importance of the SEND agenda across all partners and provide strong leadership to ensure responsibility across all partners for delivery – everyone is actively ‘at the table’. The senior responsible officer will oversee the allocation of tasks within each workstream and it is anticipated that these responsibilities may sometimes be joint across agencies and/or will alter as work progresses.

The use of a BRAG rating has been agreed to provide an at a glance summary of progress. Some of the actions set out have already been completed since the inspection.

The ratings are as follows:

Blue – complete

Green – on track

Amber – behind schedule

Red – not started/risk

A column has been added to identify the resource implications of actions as follows:

AR – Additional resource is or may be required

ER – Actions covered by existing resource

Written Statement of Action

Workstream 1: Joint planning and commissioning including intervention

Senior Accountable sponsor: Wendi Ogle-Welbourn DCS & Chair of the Child Health & Wellbeing Commissioning and Executive Boards

Delivery partners: Child Health Commissioning & Executive Board Members, Family Voice (parent-carer forum) representative, Sheelagh Sullivan (Head of SEN and Inclusion Services), Graham Puckering (Head of 0 – 25 Service), Jackie Cozens (Local Offer Lead), Jo Dickson (Communications), Toni Bailey (Assistant Director SEND), Tom Barden (Business Intelligence), Siobhan Weaver (Designated Clinical Officer)

Significant area of weakness that needs to be addressed:

Ofsted and CQC said: “Joint planning, including commissioning, and intervention are not sufficiently well established to make sure that all agencies and services play an active role in meeting the requirements of 2014 disability and special educational needs reforms.”

Outcomes (what we intend to achieve and their impact)	Ref	Implementation (Actions - what are we going to do)	Resource Required	Key milestones (Action tracker)	Deadline	BRAG + date
1.1 There is a clear and ambitious joint commissioning strategy, including effective service delivery arrangements, for children and young adults (0 – 25) with SEND that ensures: <ul style="list-style-type: none"> all services play an active role in meeting the requirements of the SEND reforms issues raised at inspection are prioritised Impact	1.1a	Coproduce a joint SEND commissioning strategy that will : <ul style="list-style-type: none"> be based on identified needs build on a gap analysis monitor delivery of commissioned services sets priorities for improvement and puts in place an action plan to rectify any deficit in provision 	ER	Needs assessment initiated and agreed by the Joint Child Health Commissioning Board (JCHCB)	Nov 2019	Nov 2019
				Baseline of needs identified by families is recorded	Jan 2020	
				Mapping existing resources against needs and identify gaps in meeting needs	April 2020	
				SEND commissioning strategy in place that ensures robust monitoring of commissioned services	June 2020	
				Commissioning of evidence based interventions within existing resource envelope to close gaps	June 2020 to	

<ul style="list-style-type: none"> Services are commissioned / delivered to meet identified agreed needs Children, young adults and families co-producing strategy ensuring that the views of all are heard and acted upon 				with procurement and delivery of services secured	April 2021	
Impact <ul style="list-style-type: none"> Young adults and families have positive experiences of services commissioned to meet their needs 	1.1b	Establish and undertake an annual 'Family Voice' Survey to seek families views on how well their needs have been met by commissioned services	ER	Establish and record the baseline of family views from implementation of the commissioning strategy	June 2020	
			ER	First Family Voice survey one year on shows improvement in how well they think their needs have been met through commissioned services	July 2021	
Impact <ul style="list-style-type: none"> Underperformance challenged and addressed leading to improved services for young adults and families Priorities outlined to increase family and user confidence in services 	1.1c	Develop a data set (using the council for disabled children's framework) to evidence performance of services against the SEND strategy and Plan. Monitor the data set at the SEND Executive Board, celebrating good performance and challenging	ER	Agreed cross agency data set in place	Feb 2020	
				Benchmark of priorities from children and families collated	Feb 2020	

		underperformance and agreeing actions to address.		Quarterly reports to SEND Executive for monitoring performance from April 2020 show progress towards achieving the outcomes in the strategy and feed into commissioning process (1.2)	April 2020	
1.2 Commissioning issues raised at inspection are prioritised and gaps closed Impact <ul style="list-style-type: none"> All services across health, education and social care have knowledge of access to equipment services so that equipment is provided efficiently. Families and young adults report to professionals, each time the equipment is provided, that they are satisfied with the timeliness of the service 	1.2	Develop a local area jointly commissioned (Peterborough and Cambridgeshire) equipment provision service for children and young adults with SEN & Disabilities	AR	Mapping of current arrangements for assessment and provision of all equipment including medical technology	Nov 2019	
				Review and gap analysis complete and presented to JCHCB	Jan 2020	
				Proposed integrated equipment service proposal presented to JCHB with commissioning recommendations taken to JCB and COT	April 2020	
				Service in place	Oct 2020	
Impact <ul style="list-style-type: none"> Service delivery provided in line with NICE guidance and national recommendations so that 	1.2b	Review the pathway for provision of continence products	ER	Review of referral, assessment and products pathway complete	Dec 2019	

children and young adults are provided with an adequate supply of products				Publication of the revised pathway on the Local Offer website	May 2020	
Impact <ul style="list-style-type: none"> SEND children and young adults access to OT and Physiotherapy Services improved in line with agreed key performance indicators (see 4.3) 	1.2c	Complete the joint commissioning of the OT and Physiotherapy service Integration and Transformation Plan to ensure improved access to OT services	AR	OT Integration and transformation plan in place	April 2020	
				Joint service specification for OT created	Dec 2020	
				Balanced Model© implemented through series of facilitated workshops	Dec 2020	
Impact <ul style="list-style-type: none"> Children and young adults who require services from Community Nursing will benefit from services that provide care up to the age of 18 years 	1.2d	Complete a review of Children's Community Nursing Services to identify provision required to meet nursing needs of children with complex health up to the age of 18 years	ER	Complete review and implement recommendations	Oct 2020	
1.3 An ambitious SEND strategy and action plan (developed jointly with Cambridgeshire) will be in place and the commitment of all partners will be evidenced by their sign up to the 'SEND pledge' Impact: <ul style="list-style-type: none"> Families and professionals say that the SEND strategy and Pledge are making a difference in 	1.3	Formally launch the joint Peterborough/Camb s SEND strategy, Pledge and associated action plan in partnership with parent /carer forums. Set up a SEND communications group to formulate and implement a communication strategy that:	ER	SEND communications group established to coproduce and implement a communication strategy	Sept 2019	Sept 2019
				Formal launch of joint SEND strategy and Pledge	Jan 2020	
				Communications strategy and action plan agreed by SEND Executive Board	Jan 2020	
				Action plan progress monitored at bi-monthly SEND Executive Board	From Feb 2020	

<p>services for SEND, in line with the 2014 Reforms</p> <ul style="list-style-type: none"> Feedback from the Peterborough community shows that they are aware of the SEND strategy and vision that “SEND is Everybody’s Business” 		<ul style="list-style-type: none"> supports the implementation of the Strategy, the Pledge and action plan, includes a clear plan for seeking feedback on how they are making an impact 		SEND pledge is circulated to all services involved in delivery to children and young adults with SEND and signed up to by 85% of those circulated	April 2020	
<p>1.4 Children, young adults, families and professionals know where to go for help and information</p> <p>Impact</p> <ul style="list-style-type: none"> Surveys carried out by Family Voice (having established a baseline) show that families report improvement in knowing how to access services for children and young adults with SEND and the timescales involved leading to greater levels of satisfaction 	1.4a	<p>Improve and raise awareness of the Local Offer working with Family voice to:</p> <ul style="list-style-type: none"> Create a Parent Participation page on the Local Offer Information on the Local Offer reviewed and extended to include a new page to describe Short Breaks Redesign the Local Offer postcards with contact details Co-produce a guide to panel decision making Improve the descriptions of the health information including a description of pathways and timescales Establish a SEND newsletter for parents, schools and professionals Develop a suite of SEND factsheets, including revised information about and promotion of Personal Budgets and Personal Health budgets 	ER	Parent participation page in place	Oct 2019	Oct 2019
				Short breaks information page included	Oct 2019	Oct 2019
				Establish baseline of parent views from Family Voice survey about parental satisfaction regarding service info on the local offer	Dec 2019	
				Postcards redesigned	Dec 2019	
				Agree a system to ensure that information about services on the Local Offer is kept up to date	Jan 2020	
				Health services access arrangements published on the Local Offer	Jan 2020	
				Increasing use of the parent participation page over time as evidenced in reports to Executive Board	From Feb 2020	
				Guide to panels produced	Feb 2020	

				Suite of health information updated	March 2020	
				Suite of SEND fact sheets and SEND newsletter published	Sept 2020	

Workstream 2: SEND Quality Assurance
Senior Accountable sponsor: Jon Lewis/Alison Bennett
Delivery partners: Toni Bailey (AD SEND), SEND quality assurance officer (appointment pending), Siobhan Weaver (DCO), Graham Puckering (Head of 0 – 25 service), Sheelagh Sullivan (Head of SEN and Inclusion Services), Senior officer from attendance team (appointment pending), Family Voice representative, Helen Whyman (Senior Public Health Information Analyst), Tom Barden (Business intelligence), Chris Stronberg (Head of IT), Jess Conway (Peterborough SENCo)
Significant area of weakness that needs to be addressed: Ofsted and CQC said: “There is no quality assurance framework for the local area’s work for children and young people with SEND. Intended outcomes for children and young adults are not targeted, measured or evaluated well enough to inform leaders about the impact of the work to implement the reforms effectively.”

Outcomes (What we intend to achieve and their impact)	Ref	Implementation (Actions - what are we going to do)	Resource Required	Key milestones (Action tracker)	Deadline	BRAG + date
2.1 At a strategic level, key decision makers know how well the local area is improving outcomes for children and young adults with SEND and where improvements are required Impact <ul style="list-style-type: none"> Reports to and minutes from the SEND Executive Board provide assured evidence of the outcomes for children, young adults and their families from March 2020 	2.1	Coproduce a local area quality assurance framework that will include; <ul style="list-style-type: none"> collating existing quality assurance arrangements setting up the system for monitoring quality of provision and outcomes for children and young adults in independent settings setting up a process for tracking the achievement of the outcomes that matter (see SEND strategy) for children and young adults with an EHCP 	AR	Quality assurance post agreed	Sept 2019	Aug 2019
				Quality assurance post holder in place	Feb 2020	
				Current QA arrangements collated	Feb 2020	
				QA framework in place	March 2020	

		<ul style="list-style-type: none"> agreeing a quality assurance mechanism for testing satisfaction of children and young adults that services they receive are specific to their needs 		Monthly reports to the SEND partnership group are used to track progress	March 2020	
2.2 All delivery partners understand their responsibilities concerning EHCPs (particularly annual reviews) and annual review processes and timelines conform to statutory expectations Impact <ul style="list-style-type: none"> Feedback regarding annual review processes increases and the majority (over 80%) of parent/carers/young people who engage express satisfaction with all aspects of the EHCP process, including the quality and accuracy of advices from all partners Timeliness of new EHC needs assessments remains high (over 85%) and the majority of decisions regarding annual reviews are made within timelines (over 90%) 	2.2a	Improve the quality and timeliness of the EHC needs assessment and review process by: <ul style="list-style-type: none"> Production of a targeted recovery plan to address annual review backlog Implementation of new EHCP processing system Use of the new QA post to further develop the multi-agency EHCP audit Review of feedback arrangements to include annual reviews and new ways of engaging with families in receipt of new EHCPs A rolling programme of training and support around the EHC needs assessment and review process is agreed and implemented with the cooperation and contribution of all partners Reports to SEND Executive Board are produced by the QA 	ER	Targeted annual review recovery plan produced	Nov 2019-	Nov 2019
				Newly received requests for assessment and annual reviews are logged on to the new system	Dec 2019	Nov 2019
				Audit arrangements reviewed and revised plans in place with the support of the new QA post	March 2020	
				Feedback arrangements reviewed and all new arrangements in place	March 2020	
				Data migration to new IT system complete and system fully operational, including reporting facilities	March 2020	
				Rolling multi-agency training programme agreed and implementation started	April 2020	

		post informed by data and feedback from services and families		Comprehensive reports to SEND Executive Board including both quantitative and qualitative data in place	April 2020	
Impact <ul style="list-style-type: none"> Sufficient capacity within the local authority to improve timeliness and quality of EHCPs impacting on quality of provision for children and young adults with EHCP's due to quicker delivery of agreed plans / reviews 	2.2b	New posts agreed to support statutory responsibilities around EHCPs within the LA, schools and settings and health partners	AR	New posts agreed by SEND Executive Board	Dec 2019	
				Post holders in place	March 2020	
2.3 Outcomes for children and young adults in out of area placements match the quality and expectation of what was commissioned Impact <ul style="list-style-type: none"> Leaders know what is happening from highlight reports to Board of the progress of children and young adults with an EHCP that show that out of area placements deliver commissioned outcomes for children and young adults 	2.3	Robust contract monitoring arrangements are developed, agreed and implemented with all partners, including the use of regional arrangements	ER	Contract and monitoring arrangements in place	Feb 2020	
				First highlight report provided to Board to include data about the extent and use of out of area placements, building upon baseline data already available	Feb 2020	
2.4 There are processes in place to increase leaders understanding about the extent of part time	2.4	Establish a system for monitoring the use of part time placements for children and young adults with SEND	ER	Guidance developed and presented to schools	Sept 2019	Sept 2019
				Baseline numbers on part time timetables collated for children and young adults with an EHCP	Feb 2020	

placements in schools for children and young adults with SEND Impact <ul style="list-style-type: none"> The Local Authority is clear about extent of part time placements in schools for children and young adults at SEN support and EHCPs Reduction in use of part time timetable provisions by 30% by July 2021 		Produce and present revised guidance regarding use of part time tables to schools and settings		System established for monitoring use of part time placements	Feb 2020	
				First highlight report to Board	July 2020	
				LA partners agree with providers a focus on reducing part time table provisions by 30%	July 2020	

Workstream 3: Role and arrangements for the DCO

Senior Accountable sponsor: Marek Zamborski

Delivery partners: Karlene Allen (Head of Children and Maternity services Commissioning and Transformation, CPCCG), FV representative, Siobhan Weaver (DCO), Ali Mayern (SEND Health Co-Ordinator, CPCCG), Alison Hanson (Head of Service Speech and Language Therapy, CCS NHST), Lorraine Cuff (Head of CAMHs Neurodevelopment Team, CPfT), members of the SEND Health Advisory Group (C&P)

Significant area of weakness that needs to be addressed:

Ofsted and CQC said: "The current arrangements for the DCO in relation to the implementation of the reforms do not allow the postholder to fulfil the obligations of the role sufficiently."

Outcomes (What we intend to achieve and their impact)	Ref	Implementation (Actions - what are we going to do)	Resource Required	Key milestones (Action tracker)	Deadline	BRAG + date
3.1 The arrangements in place for the Designated Clinical Officer (DCO) role ensure that the system fulfils the objectives of the SEND reforms. Impact <ul style="list-style-type: none"> DCO is able to fulfil the priorities set out in the WSoA and the 1st year priorities of the SEND Strategic Action Plan, measured through milestone target dates (reviewed at the SEND Partnership Group) with quarterly and annual reports to the CPCCG COT on progress of SEND. 	3.1	Develop and present a costed options appraisal to CPCCG Chief Operating Team (COT) which details the need to improve the current arrangements and capacity of the DCO role within and Children's Complex Cases service.	AR	Options appraisal for DCO capacity and recommendations presented to COT	Oct 2019	Oct 2019
				Interim arrangements to relieve immediate pressure on DCO with medium term planning for increased resource into service development	Oct 2019	Oct 2019
				Financial agreement for additional resource requirements to increase the capacity of the DCO arrangements	Nov 2019	
				Recruitment processes commenced	Dec 2019	
				Develop a detailed SEND reporting mechanism for COT	Dec 2019	

				(1/4 update and annual reporting)		
				Additional capacity in the Children' Complex Cases team to support the CCG DCO role established	March 2020	
<p>3.2 Health professionals play an active and equal part in the EHC needs assessment, preparation of EHC plans and review and removal of EHCP's.</p> <p>Impact</p> <ul style="list-style-type: none"> Children and young adults will have their health needs, provision and desired outcomes, which are consistent with current professional knowledge, detailed in their EHCP. These will be measured through EHCP audit processes (see 2.3 e) and the 6 monthly 'deep dive' EHCP audits for children and young adults with complex health needs. Feedback from children, families and schools/FE colleges will indicate that they have had a good experience where healthcare professionals have jointly planned their child or young person's EHCP 	3.2	<p>Develop and implement the <i>"Improving the effectiveness of joint working and planning of health partners, within EHC Plans"</i> Quality Improvement Initiative project.</p> <p>This QI project will:</p> <ul style="list-style-type: none"> Test the established EHCP processes, including the health advice template and training offered, against a new approach to facilitate the physical and mental health sectors to think more joined-up and person-centred for children and young adults (0-25 years) with SEND Provide individual health services with targeted, facilitated workshops which promote ownership and change of practices to engage with the EHC planning requirements relevant to their own service delivery methods. Create SEND Health 'Critical Friends' to work alongside providers who 	ER	Review and enhance the terms of reference of the SEND Health operational working group to include the role of SEND Health Critical Friends	Nov 2019	
				Use data from audits to identify up to 4 health teams that would benefit from targeted facilitation in the 1 st phase of the project	Nov 2019	
				Develop initial workshop session and test with critical friends	Dec 2019	
				Baseline established for each service using the SEND self-assessment tool	Jan 2020	
				Develop the role and facilitation skills of the SEND Health Champions to support delivery of the QI project	Feb 2020	
				Engage with SENCo network to develop feedback mechanism from schools for their experience of health involvement in EHC planning processes	Feb 2020	

<ul style="list-style-type: none"> Maintain the compliance of timescales for the EHCP initial request processes measured through monthly data from the CCG EHCP single point of access. 		<p>will facilitate ways of working that effectively implement the requirements of EHC planning</p> <ul style="list-style-type: none"> Create a set of local good practice examples from stories, data and intelligence gathered by critical friends to inform future facilitation sessions. Introduce measurements of progress with a SEND self-assessment tool for health provider services. Develop a process for DCO to monitor and agree final EHC plans. 				
<p>3.3 There is an increase in the uptake of learning disability annual health assessments for 14 – 25 year olds</p> <p>Impact</p> <ul style="list-style-type: none"> Increase from 39% to 50% of uptake by the least likely to attend group (14 – 17 year olds) by April 2021 Increase to 75% from 55% of 14 – 25 year olds attend their annual health check by April 2021 	3.3	DCO, with the PfA Health group will facilitate learning disability annual health check workshops to create an action plan for the local area in order to increase the number of young adults aged 14 – 25 who attend their LD AHC	ER	EHCP audit for post 14 years shows that the annual health check has been discussed at the annual review meeting. First report May 2020	May 2020	
				Establish a baseline from feedback from young adults that they know what an annual health check is and how to get one	May 2020	

Workstream 4: Getting support early

Senior Accountable sponsor: Raj Lakshman (Consultant in Public Health Medicine/Karen Moody (Head of Prevention and Early Help Services)

Delivery partners:), Karen Hingston (Head of Early Years), Kathryn Goose (Mental Health Commissioner), Lorraine Cuff (Head of CAMHS Neurodevelopment, CPfT), Joanne Carr (CPfT), Family Voice representative, Siobhan Weaver (DCO), Sarah Bernard (Manager Early Years Specialist Service, including Portage)

Significant area of weakness that needs to be addressed:

Ofsted and CQC said: “Early support is well embedded for children in early years, but does not follow through in all areas of the lives of children and young people as they get older. It takes too long for children, young adults and families to get the support they need.”

170

Outcomes (What we intend to achieve and their impact)	Ref	Implementation (Actions - what are we going to do)	Resource Required	Key milestones (Action tracker)	Deadline	BRAG + date
4.1 The principles of Early Support are effectively embedded for children and young adults as they get older in line with the SEND Code of Practice Impact <ul style="list-style-type: none"> Fewer part time timetables and increased access to reception for children with SEND due to better 	4.1a	Extend the opportunity to stay on or be accepted onto the Early Support pathway for children up to the end of Reception	ER	Targeted training, advice and support provided for early years and reception staff	August 2020	
		Undertake survey, in partnership with Family Voice, to establish baseline data to track the immediate and future impact of the change in approach		Support for children to the end of Reception and their families in place	Sept 2020	
				Survey and evaluation of extended offer to inform further roll out completed	July 2021	

<p>understanding and available support</p> <ul style="list-style-type: none"> Families report in the Family Voice annual survey a better transition experience for their child from early years settings to reception For the first time the Healthy Child and BSIL programmes have a sharper focus on children and young adults with SEND 	4.1b	<p>Support for SEND is clearly set out in Best Start in Life (BSiL) and Healthy Child Programme (0 – 19) to:</p> <ul style="list-style-type: none"> improve identification of need improve coordination of support for SEND across children and young adults’ services and identify KPIs in order to measure progress towards improving outcomes 	ER	<p>Clear reference to SEND is within the Every Contact Counts work stream of Best Start in Life and Healthy Child Programme.</p>	March 2020	
				<p>Evaluation framework developed for the BSiL programme</p>	March 2020	
<p>4.2 Children and young adults with SEND are identified early to ensure they can access the holistic range of help they need in a timely manner</p> <p>Impact</p> <ul style="list-style-type: none"> Feedback in Early Help reports shows that children / young adults with SEND and parents and carers of children with SEND understand how to access Early Help support and demonstrate success in navigating towards required support 	4.2	<p>Review access to support via Early Help and other routes to identify potential blockages or delays to include:</p> <ul style="list-style-type: none"> review of available information review of multiagency pathways and access to support establish processes for collecting and evaluating data for children and young adults with SEND receiving Early Help 	ER	<p>A review of all professionals and parent / carer information leaflets on Early Help pathways to support</p>	April 2020	
				<p>Implementation of a multi-agency review panel in Early Help for all requests for support to ensure children / young adults with SEND receive support in a timely manner</p>	April 2020	
				<p>Baseline of child / young person and parent/carer views on clarity of pathways to access support; provision of support and timeliness of support established</p>	April 2020	

				Baseline of numbers of children and young adults with SEND in receipt of Early Help recorded	April 2020	
<p>4.3 Children and young adults with SEND have access to health services, in particular mental health services in a timely manner</p> <p>Impact</p> <ul style="list-style-type: none"> Access targets are clearly defined and measured which allow timely interventions for children and young adults <p>Impact</p> <ul style="list-style-type: none"> Agreed access targets from mental health services are met so that children and young adults are supported by mental health services that identify needs early and provide information advice and support that improves outcomes for them Parents/carers report improvement from 2019/2020 baseline that they are listened to and given consistent advice 	4.3a	Co-Produce a set of SEND Key Performance Indicators across health services to introduce a common approach to measuring performance in SEND which includes reference to equitable waiting time targets for children with SEND.	ER	Initial contractual proposals to providers based on initial evaluation	Dec 2019	
				Finalise initial set of KPIS and monitor monthly	March 2020	
				Monitor KPIS via monthly contract meetings – ongoing in 2020	Ongoing from March 2020	
				Providers collect data	April 2020	
				Review and calibration of KPIS	Dec 2020	
				Adjustments and business as usual performance mgt	April 2021	
	4.3b	Implement the CPFT Children’s Mental Health remedial action plan (NHSE/I) so that children and young adults who require assessment and treatment from NHS mental health services will have access to these services within nationally agreed targets.	ER	2 weekly remedial action plan meetings to monitor progress of reduction in waiting times are set up	Jan 2020	
				Joint action learning events agreed between CAMHS services and the SENCO network to promote the graduated response within the emotional health and wellbeing pathway delivered across services	Aug 2020	
		Redesign workstreams to achieve routine and urgent appointments in a timely manner				

				Children will be assessed within 18 weeks from referral for routine appointments	April 2020	
				Children will be assessed within 12 weeks from referral for routine appointments	April 2021	
				Workstreams are redesigned	April 2021	
	4.3c	<p>Understand the population of children and young adults with a mental health need including a specific focus on children and young adults with SEND.</p> <p>Undertake baseline assessment of parental awareness in regard to mental health services</p> <p>Develop information delivery for parents / carers to outline graduated response to Mental Health support</p>	ER	Update and refresh the NHS Mental Health Local Transformation Plan and use NHSE Key Lines of Enquiry (KLoE's) to ensure focus on sections relevant to SEND	Dec 2019	
				Complete a Mental Health Needs assessment to identify whole population needs and how SEND is highlighted in the mental health Local Transformation Plans key lines of enquiry	March 2020	
				Focus groups with Children and Young adults to develop outcomes	July 2020	
				Use NHSE Key Lines of Enquiry (KLoE's) with focus on sections relevant for SEND to create an action plan	Sept 2020	

Workstream 5: Provision and opportunities for young adults aged 18 - 25

Senior Accountable sponsor: Debbie McQuade

Delivery partners: Graham Puckering (Head of 0-25 Service), Elizabeth Sullivan Ash (Post 16 Lead SENI Services), Matt Oliver (Service Manager Community and Interventions for Targeted Youth Support Service), Family Voice, Special school and College representative x 2 tbc, Siobhan Weaver DCO

Significant area of weakness that needs to be addressed:

Ofsted and CQC said: “The provision for young people aged 18 to 25 is not sufficiently developed to make sure that young people have the full range of opportunities and support that they need as they move through into adulthood.”

Outcomes (What we intend to achieve and their impact)	Ref	Implementation (Actions - what are we going to do)	Resource Required	Key milestones (Action tracker)	Deadline	BRAG + date
5.1 There is clarity about the range and availability of opportunities across the local area for 16 – 25 year olds with SEND Impact <ul style="list-style-type: none"> Surveys conducted through the local offer and young adults’ groups show that young adults and their families say that the Local Offer provides them with the information they need to access opportunities and the services available Impact	5.1a	Review the local offer to ensure: a) that there is clarity for young adults and their families about what support is available from health, social care and education b) any gaps are identified c) that there is a clear education offer d) that transition pathways across each service from children’s to adult services are clearly described e) that support and opportunities for 19 – 25 year olds are well represented f) that there are clear descriptions of the range of options for activity across 5 days for young adults Post 16 with an EHCP g) conduct survey focussing on effectiveness of the local offer	ER	Gaps in information on the Local offer are identified	Feb 2020	
				Gaps in the information about (c,d,e and f) are closed	Sept 2020	
				First survey of views of young adults on additional information reported on the Local Offer	Sept 2020	

174

<ul style="list-style-type: none"> Coordinated and streamlined approach to developing opportunities leading to more young adults accessing support to lead independent lives Young adults experience more holistic 5 day planning across all services and in the community 	5.1b	<p>Integrate all strategic work across the Preparation for Adulthood (PfA) arena to:</p> <ul style="list-style-type: none"> Establish one steering group Endorse existing workstreams and identify gaps Identify agreed outcomes for all activity Ensure integrated partnership working in every workstream so that all offers are holistic 	ER	<p>New PfA steering group in place and overarching action plan agreed</p>	Feb 2020	
					<p>All agreed PfA workstreams established</p>	April 2020
	5.1c	<p>Explore and trial a transitions post in at least one local special school in partnership with local colleges</p>	AR	<p>Plans for transition officer role explored and agreed with potential trial implementation from September 2020</p>	April 2020	
<p>5.2 In order to address one of the specific areas of weakness identified during the inspection a priority focus will be to ensure that: Health services transition arrangements for 16-25 year olds with the most complex health needs are person centred and organised well</p> <p>Impact</p> <ul style="list-style-type: none"> Children and young adults experience clear and person 	5.2a	<p>Transition Arrangements (movement from children to adult services) for each provider service are clear through:</p> <ul style="list-style-type: none"> Review of the CCG improvement plan to ensure this area is addressed Production and implementation of a transitions protocol for all services provided through CCG for children and young adults with SEND 	ER	<p>Review the 2017 Improvement Plan for CCG provider services</p>	Nov 2019	Nov 2019
				<p>Ensure all current transition pathways are detailed on the local Offer</p>	Jan 2020	
				<p>Strategic transitions protocol coproduced with CCG and providers</p>	June 2020	
				<p>All new transition protocols implemented</p>	April 2021	
	5.2b	<p>Develop the role of the Mental Health Transitions worker to support children and young adults with complex Mental</p>	AR	<p>SEND training required for Mental Health Transition worker identified and delivered</p>	March 2020	

centred transition arrangements between children's and adults health services		Health and SEND to transition into adult services		Establish and implement measurement of key performance indicators as per milestones in section 4.3a	July 2020	
---	--	---	--	---	-----------	--

Appendix A

Membership of the Peterborough SEND Partnership Group	Membership of the Joint SEND Executive Board
Head of SEN and Inclusion Services	Independent Chair
Clinical Lead for Children with Complex Needs/Designated Clinical Officer	Executive Director – People & Communities, Cambridgeshire & Peterborough Local Authorities (CCC/PCC)
Chief Operating Officer, Family Voice	Chief Operating Officer, Cambridgeshire & Peterborough Clinical Commissioning Group
Head of 0 – 25 service	Clinical Lead for Children with Complex Needs, Cambridgeshire & Peterborough Clinical Commissioning Group
Specialist Commissioner	Service Director, Children’s & Safeguarding, CCC/PCC
Children’s Commissioner	Service Director, Education, CCC/PCC
Head of Early Years	Cabinet Member for Childrens Services, Education, Skills and University, Peterborough City Council
Head of Early Help	Chair of Childrens and Young People’s Committee, Cambridgeshire County Council
Head of Targeted Youth Support	Assistant Director, SEND & Inclusion, CCC/PCC
Customer Feedback Manager	Assistant Director, School Standards and Effectiveness, CCC/PCC
	Assistant Director, Childrens Quality Assurance & Safeguarding
	Assistant Director, Adults Social Care Operations, PCC
Area SENCo	Heads of Service, SEN and Inclusion, CCC and PCC

	Heads of Service 0-25 Service / Children with Disabilities, CCC and PCC
Head of Corporate Parenting	Skills and Employment Representative
Business Intelligence Manager	Communications and Marketing Manager, CCC/PCC
Head of Therapies	Representatives from primary, secondary and special schools and further education establishments Cambridgeshire and Peterborough
SENCo rep	PinPoint (Cambridgeshire)
SEND consultant	Family Voice (Peterborough)
Team manager Integrated Neurodevelopmental Service CAMHS	Partnership Manager, CCC/PCC



Making SEND everybody's business

**A strategy to provide inclusion
for children and young people
aged 0-25 with special educational
needs and disabilities**

Cambridgeshire and Peterborough 2019-2024

Contents

Foreward	Page 34
Introduction	Page 35
A shared vision	Page 36
Principles	Page 37
We will work together to	Page 37
What do we need to do?	Page 37
They key concerns that arose	Page 38
The three priority areas for action identifies as	Page 39
How are we going to deliver the strategy?	Page 40
How will we recognise success?	Page 42
Who will oversee the strategy	Page 44

With special thanks to everyone who worked on this strategy. They are too numerous to name them all here but include local authority teams from Cambridgeshire and Peterborough, the Cambridgeshire and Peterborough Clinical Commissioning Group and other health organisations, the SEND parent carer forum for Peterborough – Family Voice and Pinpoint the parent carer forum for Cambridgeshire, the children, young people and families who took part in the engagement workshops and online survey, as well as to the elected members of Cambridgeshire and Peterborough Councils and the schools, youth groups and other organisations in Cambridgeshire and Peterborough who have been involved.



Foreword

We have listened to what children and young people with Special Educational Needs and Disabilities (SEND) and their families and carers have told us about their experiences and views. We have worked together with them to develop this strategy. It is part of our commitment to improve the life outcomes for children and young people from across the local area.

The strategy has a clear vision that:

Special Educational Needs and Disabilities (SEND) is Everybody's Business.

A wide range of people are playing an important part in delivering this vision. Elected members, schools and childcare settings, leaders and managers from education, health and social care services together with parents/carers, children and young people are driving our ambition forward.

The work is led by the Cambridgeshire and Peterborough SEND Executive Board. This is the local partnership that brings together organisations and parent carer forums responsible for services and support for children, young people and families in a shared commitment to achieving our vision.

The purpose of this strategy is to set out our vision, principles and priorities to ensure that we are working together effectively to identify and meet the needs of Cambridgeshire and Peterborough's children and young people with Special Educational Needs and/or Disabilities (SEND) from birth to the age of 25.

The strategy aims to meet the requirements of the Children and Families Act in a way that is ambitious, inclusive and realistic and makes best use of the resources available to us.

We have high aspirations for all our children and young people and want to ensure they have the right support, that is provided in the right place and at the right time so that they can thrive and be the best they can be.



Wendi Ogle-Welbourn

Introduction

This document sets out a vision and strategy for children and young people (0 - 25 years) with special educational needs and disabilities (SEND) in Cambridgeshire and Peterborough. The strategy is built upon a shared belief that considering and providing for the needs of children and young people with SEND should be 'everybody's business'. The collective desire is to ensure a holistic and inclusive approach evidenced by high quality, multi-agency services and provision focused upon enabling children and young people with SEND to thrive.

The strategy was co-produced with key partners and draws upon data from:

- Feedback from children, young people and their parent/carers
- National and local data on trends in special educational needs and disability
- Information from an externally commissioned sufficiency analysis
- Peterborough and Cambridgeshire local area self evaluations and SEND action plans
- Feedback from schools and settings
- Data from health, social care and other key agencies
- Early Years Peer review (2018)

This strategy is intended to cover the 'local area' which is defined as the geographical area of both Cambridgeshire and Peterborough and includes the local authority, clinical commissioning groups (CCGs), public health, NHS England for specialist services, early years settings, schools and further education providers.

The legal definitions outlined in the Equality Act 2010, Children and Families Act 2014 and SEND Code of Practice 2015 (see appendix 1) are used in the strategy to identify what we mean by children and young people with SEND.

This strategy covers the issues that are common to both Cambridgeshire and Peterborough local areas at a strategic level. The intention is to help us work better together, in the interests of children and young people, but it also recognises that some actions will be responsive to issues specific to Cambridgeshire or Peterborough.

The strategy recognises the need to acknowledge, and link with, other pending work across both local authorities e.g. Joint Early Years Strategy.

A shared vision

The shared vision and purpose was co-produced through a series of workshops held with representatives from Cambridgeshire and Peterborough in 2017-18. The shared vision was for children and young people to:

- Lead happy, healthy and fulfilled lives, having choice and control over decisions about their health, education, employment, friendships and relationships
- Achieve in line with, or better than, expectation in their early years, school, further education and training
- Successfully participate in the community and access meaningful occupation, employment and life-long learning opportunities

The diagram below was developed at a parent lead workshop with subsequent involvement from children and young people, and illustrates what families sought as the 'lived experience' of parents/carers, children and young people that would be the outcome of a successful SEND strategy:



In summary this means children and young people will be able to:

Dream big - Achieve well - Have choice - Control - Lead happy and fulfilled lives

Principles

In order to achieve this vision, families, support services and educational settings across Cambridgeshire and Peterborough have agreed the attitudes we expect each other to adopt when working with or caring for children and young people with special educational needs and/or disabilities (SEND). These are described in detail in the document “Cambridgeshire and Peterborough Expects – Our Pledge.”

We believe that the culture promoted by adopting the agreed attitudes is crucial to ensuring that SEND is everybody’s business. The commitments that we expect everyone to adopt and sign up to are summarised below

Our commitment is that everybody can be:

Aspirational - Confident - Healthy - Included - Respected - Safe - Successful

We will work together to

- Have high expectations
- Make everyone welcome
- Have a 'CAN-DO' approach
- Listen
- Celebrate success
- Work in ways that build trust
- Be transparent and honest
- Be positive and constructive
- Value individuality and celebrate diversity
- Build resilience and self confidence
- Offer opportunities to experience excellent support
- Have the skills to achieve
- Be a positive part of the local community
- Stay as healthy and well as we can be

What do we need to do?

In order to understand what we need to do and what our priorities for the strategy should be, we have drawn on a number of sources of information. These include:

- Review of the national and local context and data that outlines trends in the pupil population
- Analysis of the local data and the joint sufficiency exercise
- What families have said through surveys and their own evaluative reports
- What children and young people said through ‘Big Youth Shout Out’

- Self evaluation processes and tracking progress through SEND Implementation action plans
- Regular analysis of statutory performance e.g. meeting timescales
- Response to statutory duties and requirements including compliance review of implementation of the Code of Practice
- What other practitioners including health, social care and schools and educational settings have said
- Ofsted and CQC SEND inspection of Cambridgeshire
- Peer review
- Social, Emotional and Mental Health (SEMH) review
- Transforming Care review
- Local offer reports/data

The key concerns that arose:

- The growth in overall numbers and trends for the future
- The need to ensure SEND is “everybody’s business” and not just the concern of the few
- Ensuring that the participation of children and young people in services development and commissioning should become routine, part of ‘the way that we work’
- The need for the development of a graduated response and access to services that prevent escalation including school to school support
- The growth in post 16 young people with an EHCP – there is a need for improved preparation for moving into adulthood and associated service development
- The lack of a cohesive, co-ordinated offer at transition points from services working together, particularly the issues that arise from the misalignment between health services (0-18) and Local Authority (LA) services for 0-25 year olds
- The patchiness and fragility of current integrated and collaborative working which needs to further develop including joint decision making, funding arrangements etc

- The need to further develop joint robust commissioning processes/commissioning cycle (e.g block and school contracts, mental health services)
- Gaps in provision across all services (health, education and social care) - joint commissioning ensures that children are being educated as close to home as possible – there is a need to rebalance spend and use all resources to deliver in the appropriate setting
- Need to better understand severity and extent of needs and develop a good local offer re: early help, children in need and those with more complex needs including the care offer from all social care services
- Use and allocation of financial resources needs to be more transparent

The three priority areas for action were identified as:

1

SEND is everybody's business - embedding the vision of the SEND Strategy into the practice of everyone who works with children and families in ways that strengthen families

2

Identify and respond to needs early - a holistic and joined up early identification of and graduated response to needs

3

Deliver in the right place at the right time - improving outcomes for children and young people through making best use of resources, ensuring a graduated response and high quality local support and provision

How are we going to deliver the strategy?

Making SEND everybody's business

This is a 5 year strategy. It will be reviewed and progress monitored, through the governance arrangements outlined in section 5. The strategy will be updated as appropriate in response to changes in local needs and issues.



Examples of the issues that we will aim to address under the three priority areas of the strategy include:

- Promoting a shared vision and expectation of responsibility across all service providers who come into contact with children and young people with SEND that “SEND is everybody’s business” and not just the concern of the few
- Ensuring that every service is signed up to the principles of the SEND strategy - a multi service integrated approach that ensures child and family are engaged and families and carers feel they only need to tell their story once
- Sharing and aligning our practice to present have a stronger joined up services working with families and carers in response in key areas like such as early identification, assessment, personal budget arrangements; transitions and person centred and/ outcomes oriented approaches
- Ensuring our workforce have the skills and knowledge required and access to appropriate training

Identify and respond to needs early

- Promoting an inclusive, timely and graduated response to improve confidence, capacity and trust in local support
- Ensuring that everyone is able to identify and respond to needs early, from pre-birth to 25 years, from the earliest point of contact e.g including health visitors, midwifery, hospital staff, GP and early years
- Ensuring that we can improve outcomes for children and young people

Deliver in the right place

- Embedding a strategic approach to seeking the views of children, young people and their families in order to improve their personal experience of service delivery and also to inform the wider development and/or commissioning of services
- Promoting alignment, collaboration and creative solutions across all services in both Local Areas to make best use of available resources and so that children and young people can be supported locally
- Ensuring families feel confident that there is a good and appropriate local choice option for children and young people in all but the most exceptional cases
- Addressing the issues arising from the growth in demand and population, particularly the 16 years plus age group
- Ensuring a broad range of opportunities is available for young people over the age of 16 years
- Focus all local resources (health, education and social care) to enhance the total provision so that children and young people can be supported locally
- Reviewing and re-modelling our resources so that they are sufficient to meet current and future need

A strategic action plan will be developed from the issues identified. The actions will be driven by key lead champions who will coordinate work programmes and/or task and finish group working as required.

Work will to a large extent involve Cambridgeshire and Peterborough colleagues working together with other partners but there will be some discrete areas that require a more local response. These will be noted in the plan and cross refer to the individual SEND action plans for each council.

How will we recognise success?

We have agreed a number of success criteria to enable us to measure our progress.

The measures are intended to keep a balance between being aspirational but also realistic.

SEND is everybody's business

- Parents/carers report increased confidence at transition points between services and when there are changes in provision (e.g primary to secondary school)
- Annual monitoring of joint commissioning contracts shows that arrangements take a person centred approach
- Data from all agencies (e.g referrals data, SEN audit) shows timely identification of need
- The majority of children and young people with an education, health and care plan (EHCP) are educated in their local mainstream school - nationally published data shows that the balance of those with an EHCP in mainstream is in line with national, regional and statistical neighbours
- All professionals know the local offer and what the contribution of their service and other services should be
- There is a reduction year on year in the number of fixed term and permanent exclusions of children and young people with SEND
- Key data shows proportionate representation of children and young people with SEND (e.g. elective home education, attendance data, youth offending, emergency health admissions, social care services)
- Annual survey carried out by parent/carer forums shows evidence that year on year parents/carers have increasing confidence in the system and, where issues persist, there is clear evidence of follow-up action to address
- Service development/provision and commissioning of services clearly reflects user feedback

Identify and respond to needs early

- Feedback from parents/carers shows satisfaction with early identification of need, by all agencies
- Data shows less conflict in the system e.g. number of Tribunals registered, number of appeals
- Numbers of children and young people identified will be in line with population expectations
- Healthy child programme quarterly report shows all checks carried out note SEND issues
- Quality of all assessments will reflect a child centred approach and demonstrate joined up working
- Annual local authority and parent/carer survey data shows that there is a continuing increase in the number of parents/carers, children and young people who report a positive experience of, and confidence in, the SEND support system
- Practitioners report they are confident and have the tools, resources and access to CPD they need to be effective
- The progress and attainment of children and young people receiving SEND support is as good as or better than their peers in comparable authorities at all key stages
- The progress and attainment for children and young people with an EHCP is as good as, or better than, their peers in comparable authorities at all key stages

Deliver in the right place

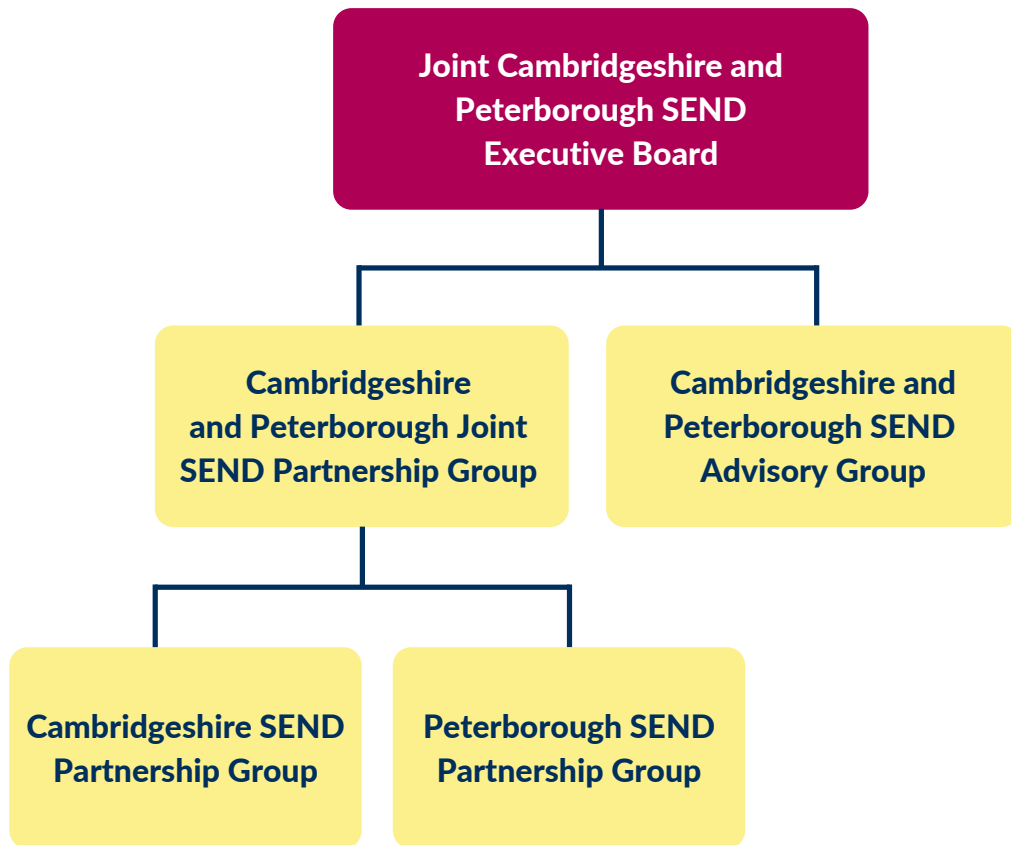
- A termly audit of EHCPs and other plans related to SEND shows that they reflect a holistic package that enables families to flourish locally
- Children and young people have their needs met locally, reducing reliance on out of county places with a reduction in travel time and number of reported incidents during travel
- Data systems are in place that enable appropriate measurement of the timeliness and quality of input to EHCP processes and other plans from all statutory agencies

- Quarterly reports/audits show an increase in the number of creative, collaborative and flexible packages of support with a clear link between the identified needs/outcomes in plans and decision making processes
- There is a year on year increase in the take up of personal budgets particularly by young people post 16
- There is evidence that the increases in take-up of personal budgets is stimulating the market range
- Improved outcomes for vulnerable groups with SEND (looked after children, children in need, children in the youth justice system) are demonstrated as a result of an increase in collaborative commissioning
- There is good planning for adult life with young people and their families reporting increased choice and control with regard to living independently, having good health and opportunities to take part in a range of activities including employment
- All children and young people leave school with an option of further education, employment or training - there is a drop in numbers of those with EHCP who are not in education, employment or training (NEET)
- The commissioning of SEND services and provision is based upon data and considers the needs of both local authorities
- The number of children and young children with a diagnosable mental health condition receiving treatment increases in line with NHS targets

Who will oversee the strategy?

The joint Cambridgeshire and Peterborough SEND Executive Board is responsible for the governance and commissioning of services to support children and young people with SEND and will be key to the delivery of this strategy. Membership of the Board include the parent forums, Cambridgeshire County Council, Peterborough City Council and the joint Clinical Commissioning Group (CCG).

A Cambridgeshire and Peterborough SEND Partnership Group provides the mechanism for tracking and monitoring the joint SEND strategic action plan. The Partnership Groups are accountable to the Executive Board enabling a clear link between strategic and operational action.



With special thanks to everyone who worked on this strategy. They are too numerous to name them all here but include local authority teams from Cambridgeshire and Peterborough, the Cambridgeshire and Peterborough Clinical Commissioning Group and other health organisations, the SEND parent carer forum for Peterborough – Family Voice and Pinpoint the parent carer forum for Cambridgeshire, the children, young people and families who took part in the engagement workshops and online survey, as well as to the elected members of Cambridgeshire and Peterborough Councils and the schools, youth groups and other organisations in Cambridgeshire and Peterborough who have been involved.

This page is intentionally left blank